

DRAWING REVISIONS

#	DATE	BY	DESCRIPTION
0	01/24/20	SY	FUSION ANODE UPDATE



**FUSION T2 ANODES
CORROSION PROTECTION
SHOP DRAWINGS**

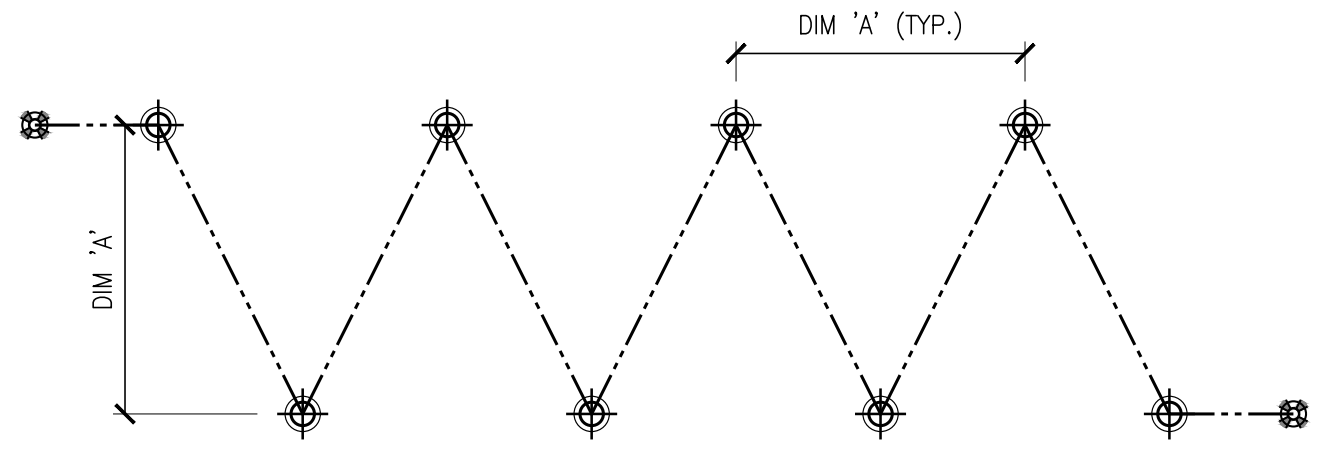
**GENERAL ANODE
LAYOUT & NOTES**

VECTOR CORROSION TECHNOLOGIES
27A UPPER HIGH STREET
CRADLEY HEATH
BIRMINGHAM
WEST MIDLANDS
B64 5HX
PH: 01384 671400
VECTOR-CORROSION.EU

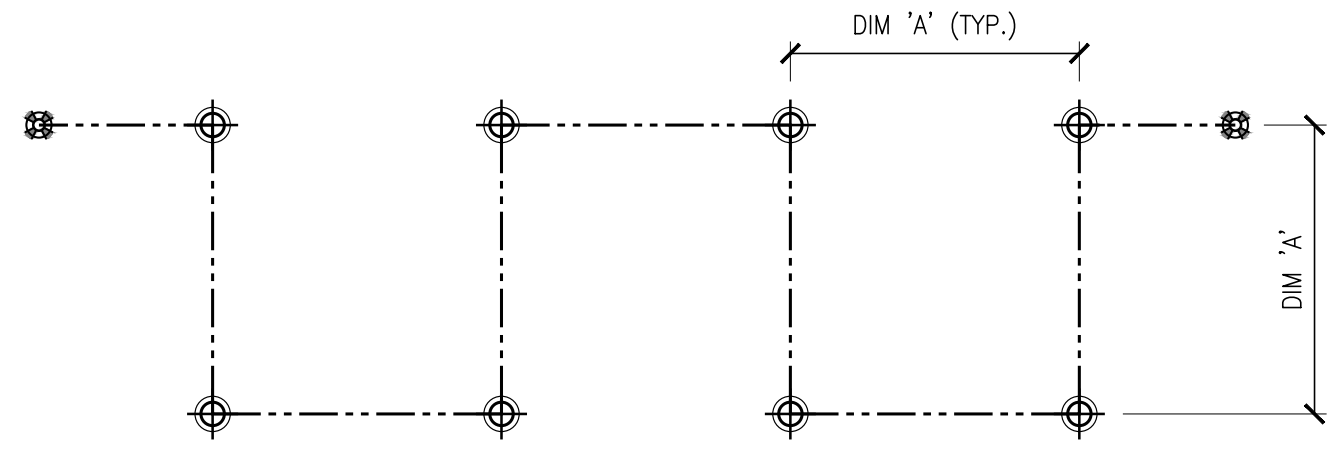
PROJECT NO. —

DRAWING NO.

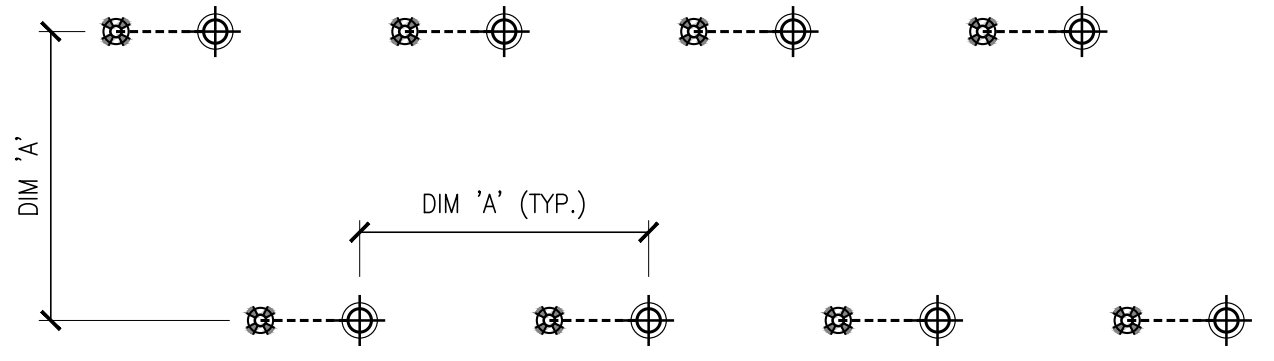
CP1.1



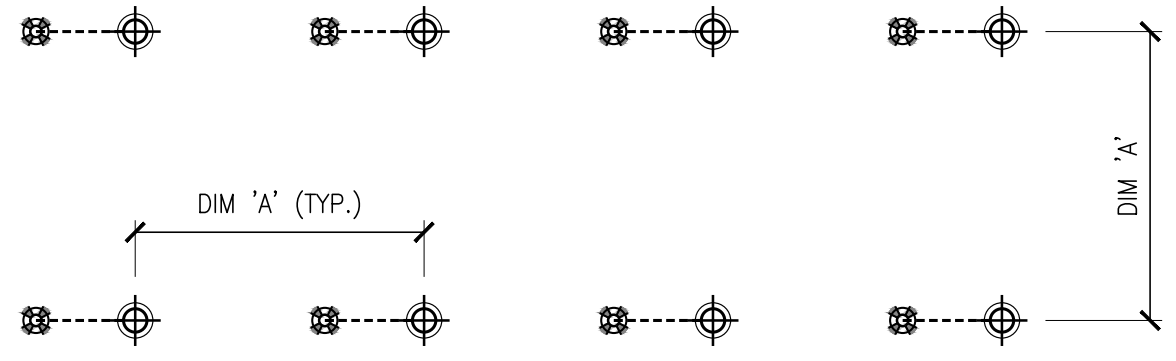
ANODE LAYOUT WITH HEADER WIRE
STAGGERED LAYOUT - PLAN VIEW SCHEMATIC



ANODE LAYOUT WITH HEADER WIRE
ALIGNED LAYOUT - PLAN VIEW SCHEMATIC



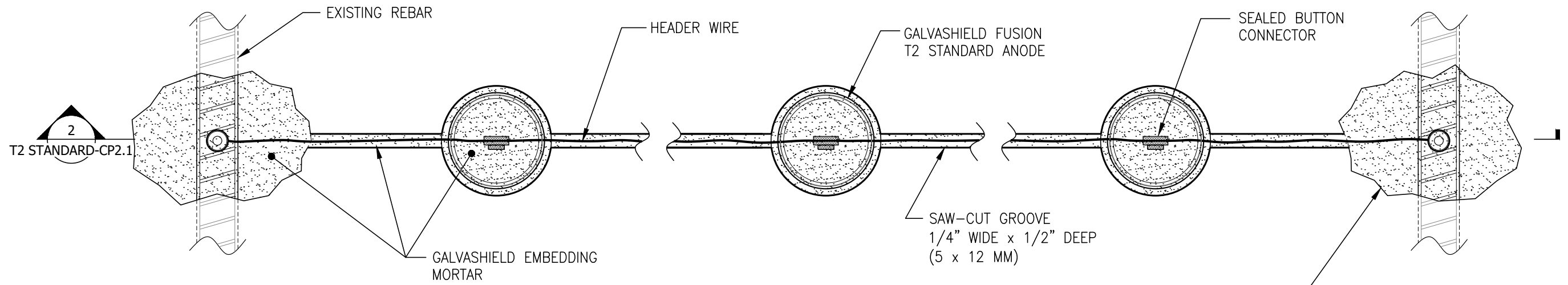
ANODE LAYOUT WITH INDIVIDUAL CONNECTION
STAGGERED LAYOUT - PLAN VIEW SCHEMATIC



ANODE LAYOUT WITH INDIVIDUAL CONNECTION
ALIGNED LAYOUT - PLAN VIEW SCHEMATIC

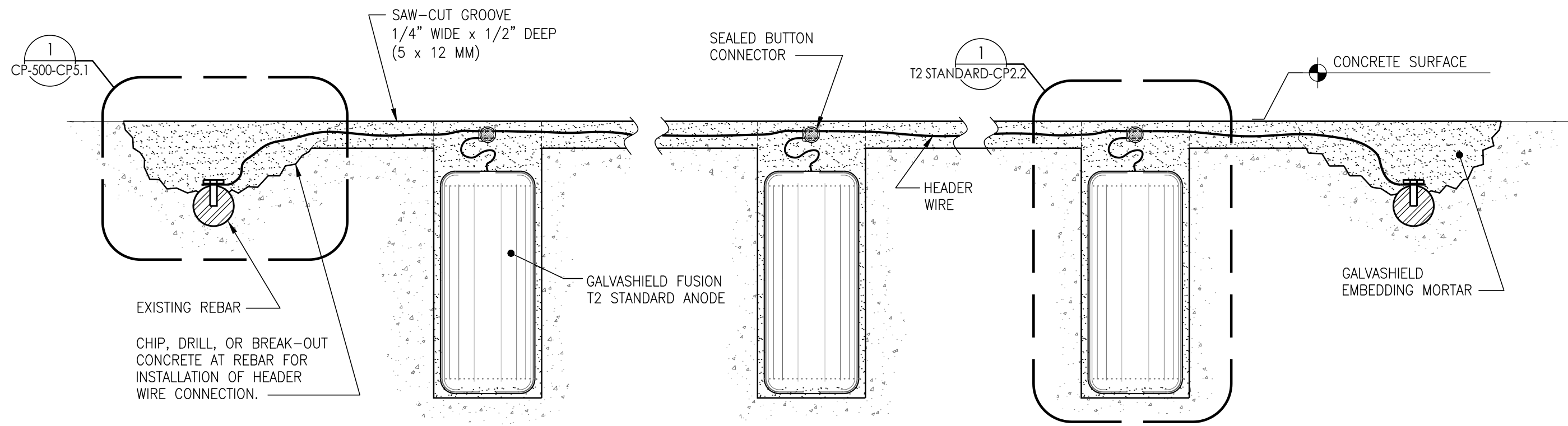
LEGEND	
	GALVASHIELD ANODE
	REBAR CONNECTION
	SAW-CUT WITH HEADER WIRE
	SAW-CUT WITH DIRECT CONNECTION WIRE

- | LAYOUT NOTES |
|--|
| • THERE SHALL BE A MINIMUM OF TWO REBAR CONNECTIONS PER STRING OF 20 ANODES. |
| • EACH HEADER WIRE TO BE CONNECTED TO REBAR AT BOTH ENDS. HEADER WIRE SHALL BE 15 AWG (1.5 MM NOMINAL). |
| • ANODE SPACING IN EACH DIRECTION (DIM 'A') SHALL NOT EXCEED MAXIMUM SPACING PER THE DESIGN DRAWINGS/SPECIFICATIONS. |
| • LOCATE EXISTING REINFORCEMENT AND INSTALL ANODE CENTERED BETWEEN BARS. |



1 PLAN VIEW
GALVASHIELD FUSION T2 STANDARD ANODES WITH HEADER WIRE
SCALE: 6" = 1'-0"

CHIP, DRILL, OR BREAK-OUT
CONCRETE AT REBAR FOR
INSTALLATION OF HEADER
WIRE CONNECTION (SEE
CONNECTION DETAILS).



2 SECTION VIEW
GALVASHIELD FUSION T2 STANDARD ANODES WITH HEADER WIRE
SCALE: 6" = 1'-0"

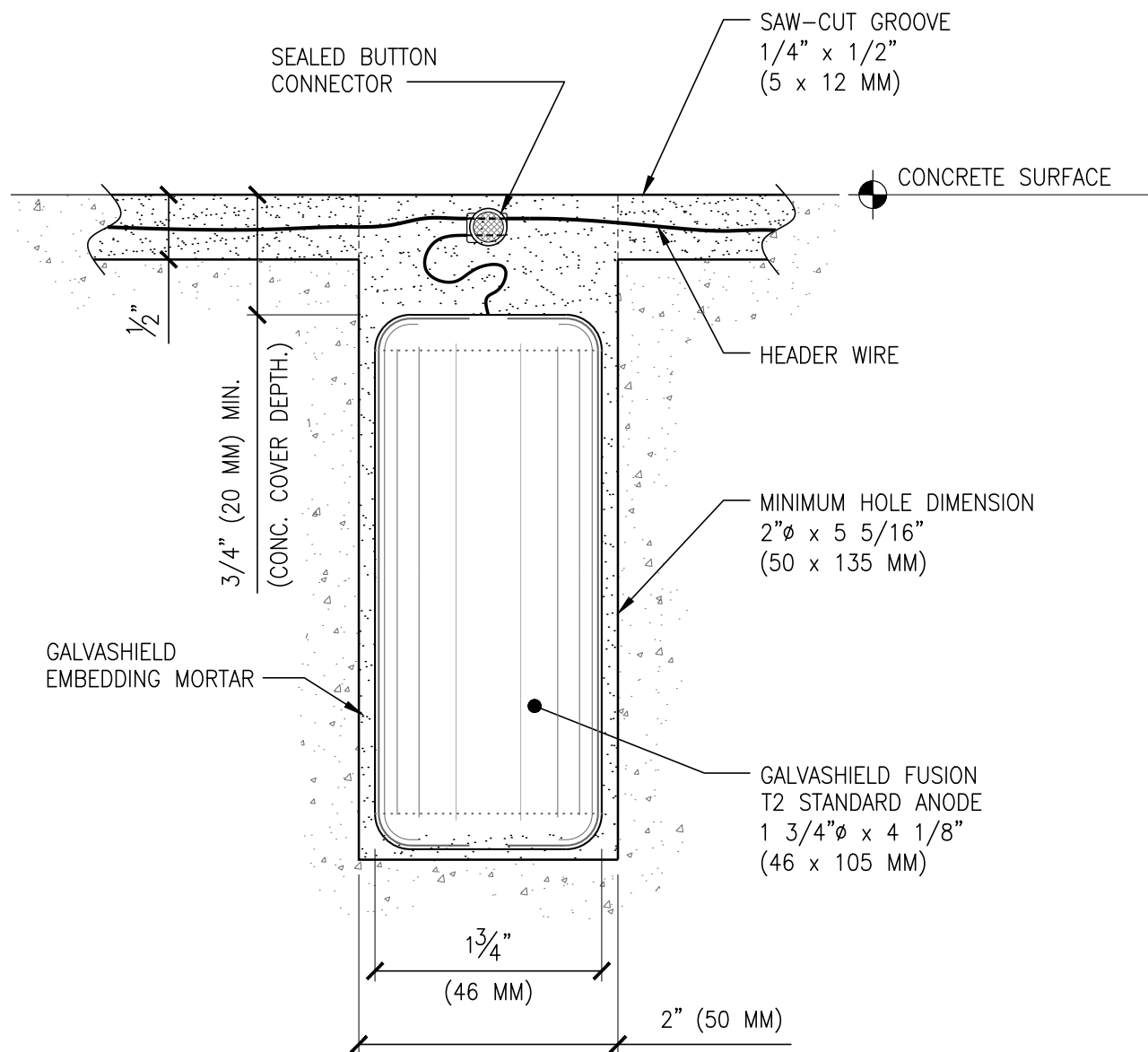
DRAWING REVISIONS			
#	DATE	BY	DESCRIPTION
0	01/24/20	SY	FUSION ANODE UPDATE



**FUSION T2 ANODES
CORROSION PROTECTION
SHOP DRAWINGS**

**FUSION T2 STANDARD
ANODE INSTALLATION
WITH HEADER WIRE**

VECTOR CORROSION
TECHNOLOGIES
27A UPPER HIGH STREET
CRADLEY HEATH
BIRMINGHAM
WEST MIDLANDS
B64 5HX
PH: 01384 671400
VECTOR-CORROSION.EU
PROJECT NO. _____
DRAWING NO. _____
**T2 STANDARD-
CP2.1**



1 SECTION VIEW
 GALVASHIELD FUSION T2 STANDARD ANODE - INSTALLATION WITH HEADER WIRE
 SCALE: 9" = 1'-0"

DRAWING REVISIONS			
#	DATE	BY	DESCRIPTION
0	01/24/20	SY	FUSION ANODE UPDATE



**FUSION T2 ANODES
 CORROSION PROTECTION
 SHOP DRAWINGS**

**FUSION T2 STANDARD
 ANODE INSTALLATION
 WITH HEADER WIRE**

VECTOR CORROSION
 TECHNOLOGIES
 27A UPPER HIGH STREET
 CRADLEY HEATH
 BIRMINGHAM
 WEST MIDLANDS
 B64 5HX
 PH: 01384 671400
 VECTOR-CORROSION.EU

PROJECT NO. —

DRAWING NO.
**T2 STANDARD-
 CP2.2**

DRAWING REVISIONS

#	DATE	BY	DESCRIPTION
0	01/24/20	SY	FUSION ANODE UPDATE



**FUSION T2 ANODES
CORROSION PROTECTION
SHOP DRAWINGS**

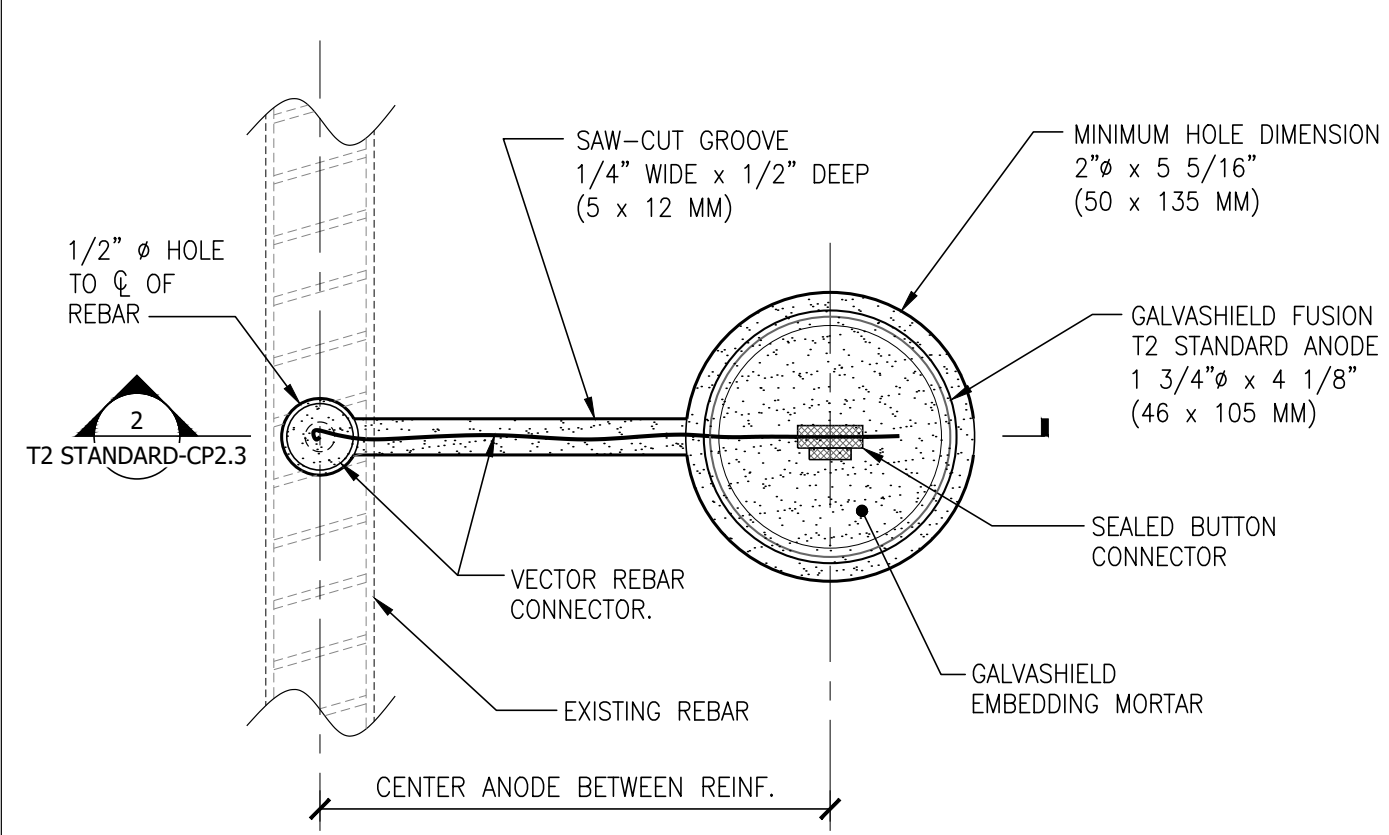
**FUSION T2 STANDARD
INSTALLATION WITH
DIRECT CONNECTION**

VECTOR CORROSION TECHNOLOGIES
27A UPPER HIGH STREET
CRADLEY HEATH
BIRMINGHAM
WEST MIDLANDS
B64 5HX
PH: 01384 671400
VECTOR-CORROSION.EU

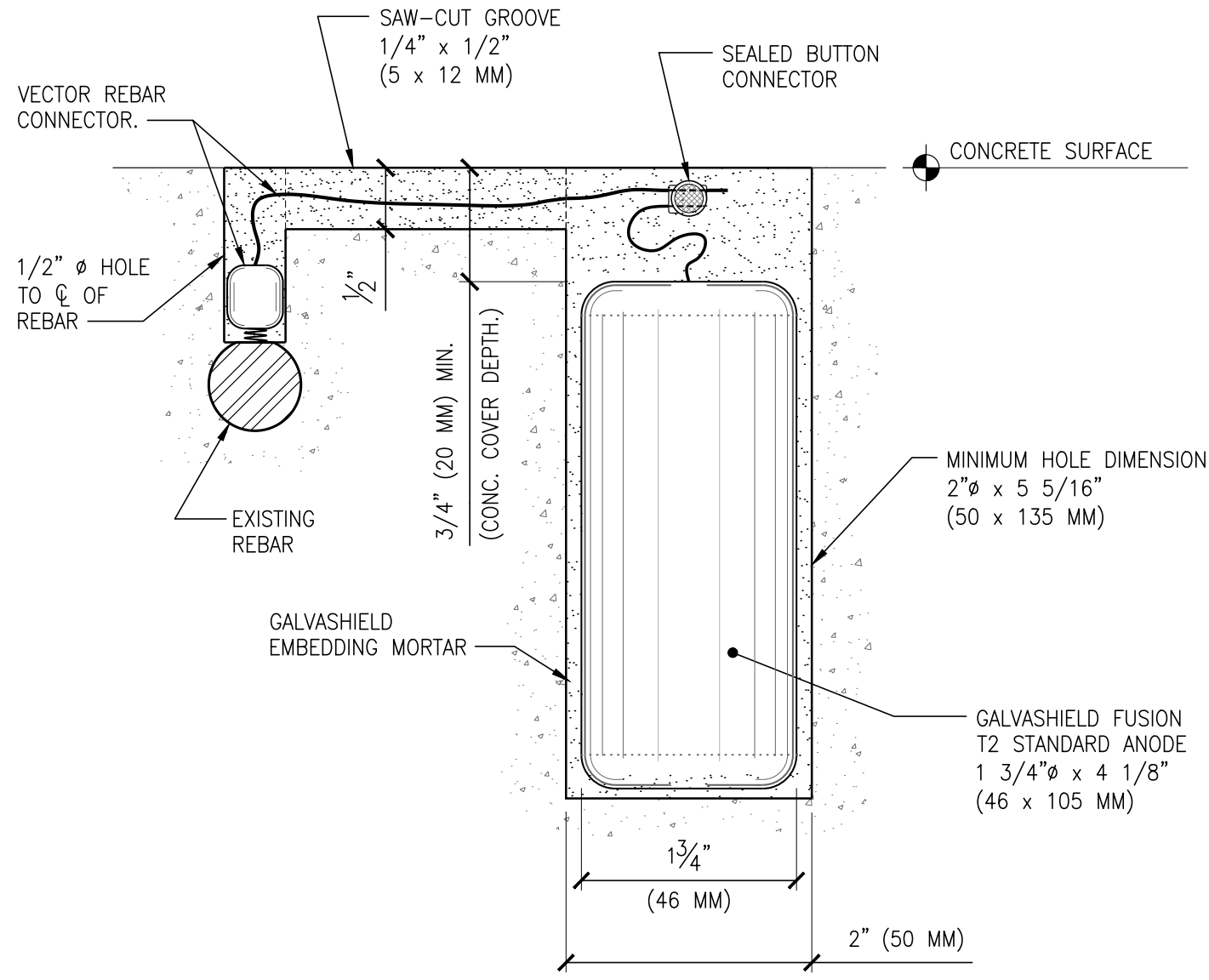
PROJECT NO. —

DRAWING NO. —

T2 STANDARD-CP2.3



1 PLAN VIEW
GALVASHIELD FUSION T2 STANDARD ANODE - DIRECT CONNECTION
SCALE: 9" = 1'-0"



2 SECTION VIEW
GALVASHIELD FUSION T2 STANDARD ANODE - DIRECT CONNECTION
SCALE: 9" = 1'-0"

DRAWING REVISIONS

#	DATE	BY	DESCRIPTION
0	01/24/20	SY	FUSION ANODE UPDATE



**FUSION T2 ANODES
CORROSION PROTECTION
SHOP DRAWINGS**

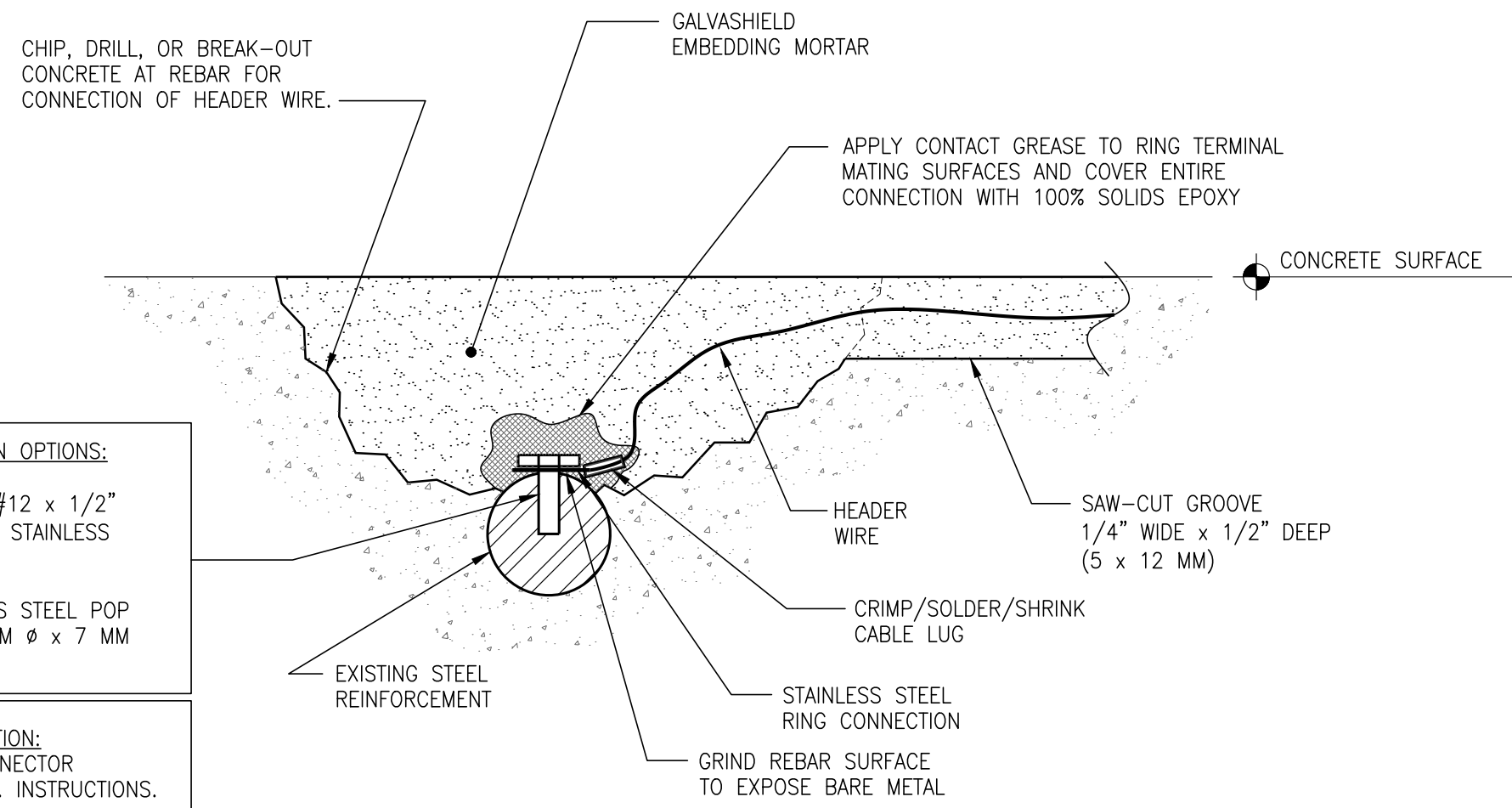
**DRILLED HEADER
WIRE CONNECTION**

VECTOR CORROSION TECHNOLOGIES
27A UPPER HIGH STREET
CRADLEY HEATH
BIRMINGHAM
WEST MIDLANDS
B64 5HX
PH: 01384 671400
VECTOR-CORROSION.EU

PROJECT NO. —

DRAWING NO.

CP5.1



- DRILLED CONNECTION OPTIONS:
- DRILL & TAP WITH #12 x 1/2" (6 MM Ø x 12 MM) STAINLESS STEEL CAP SCREW.
 - 3.2 MM Ø STAINLESS STEEL POP RIVET INTO A 3.5 MM Ø x 7 MM DEEP HOLE.

ALTERNATE CONNECTION:
VECTOR REBAR CONNECTOR
INSTALLED PER MFR. INSTRUCTIONS.

SECTION
DRILLED CONNECTION TO REBAR
1 SCALE: 12" = 1'-0"