

DRAWING REVISIONS

#	DATE	BY	DESCRIPTION
0	01/24/20	SY	FUSION ANODE UPDATE



**FUSION T2 ANODES  
CORROSION PROTECTION  
SHOP DRAWINGS**

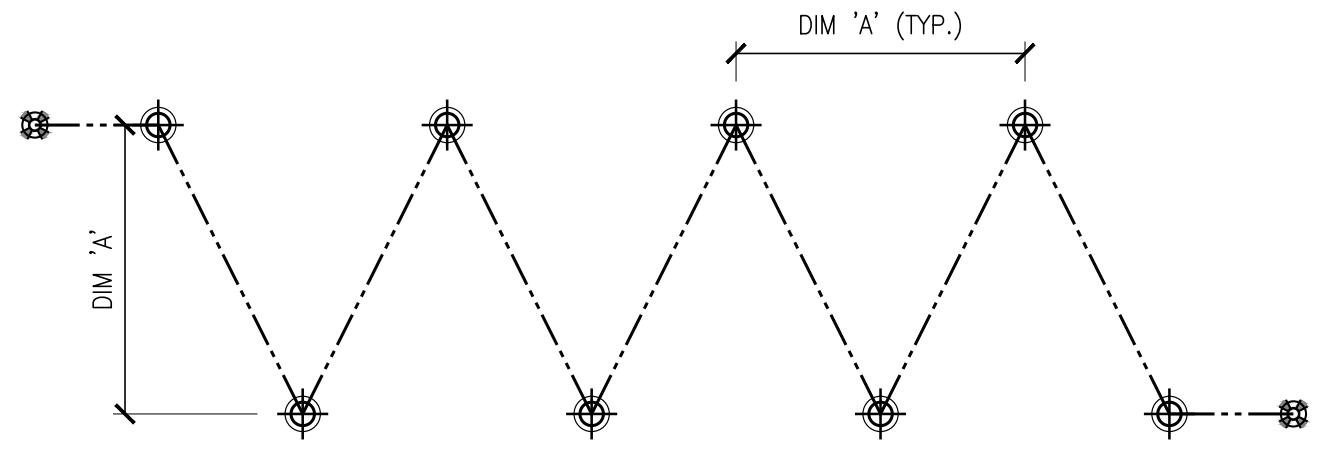
**GENERAL ANODE  
LAYOUT & NOTES**

VECTOR CORROSION TECHNOLOGIES  
27A UPPER HIGH STREET  
CRADLEY HEATH  
BIRMINGHAM  
WEST MIDLANDS  
B64 5HX  
PH: 01384 671400  
VECTOR-CORROSION.EU

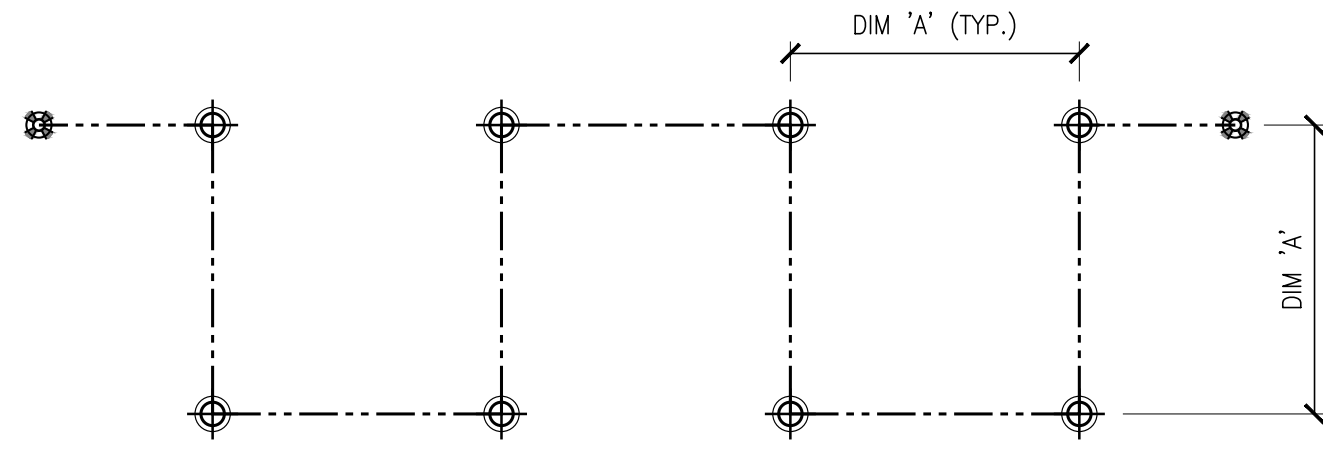
PROJECT NO. —

DRAWING NO.

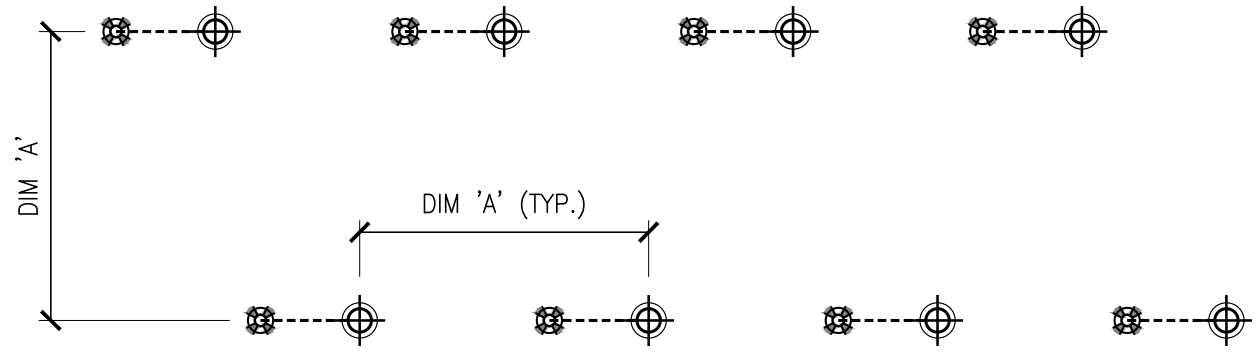
CP1.1



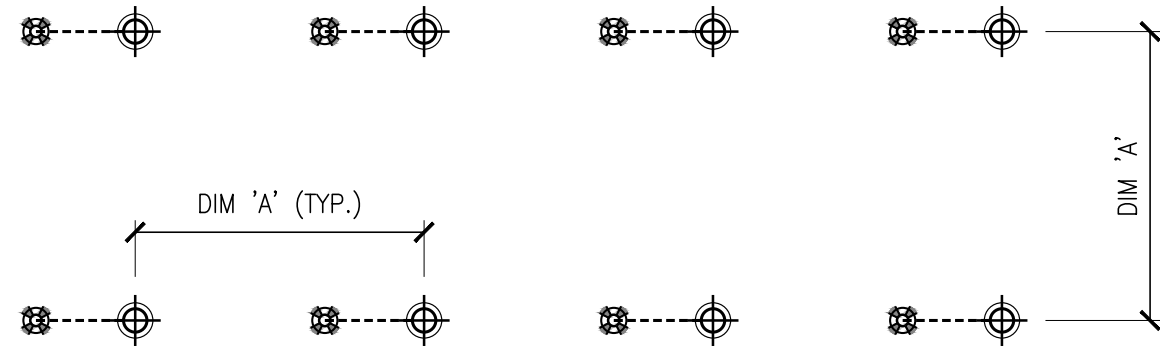
ANODE LAYOUT WITH HEADER WIRE  
STAGGERED LAYOUT - PLAN VIEW SCHEMATIC



ANODE LAYOUT WITH HEADER WIRE  
ALIGNED LAYOUT - PLAN VIEW SCHEMATIC



ANODE LAYOUT WITH INDIVIDUAL CONNECTION  
STAGGERED LAYOUT - PLAN VIEW SCHEMATIC



ANODE LAYOUT WITH INDIVIDUAL CONNECTION  
ALIGNED LAYOUT - PLAN VIEW SCHEMATIC

LEGEND	
	GALVASHIELD ANODE
	REBAR CONNECTION
	SAW-CUT WITH HEADER WIRE
	SAW-CUT WITH DIRECT CONNECTION WIRE

LAYOUT NOTES
• THERE SHALL BE A MINIMUM OF TWO REBAR CONNECTIONS PER STRING OF 20 ANODES.
• EACH HEADER WIRE TO BE CONNECTED TO REBAR AT BOTH ENDS. HEADER WIRE SHALL BE 15 AWG (1.5 MM NOMINAL).
• ANODE SPACING IN EACH DIRECTION (DIM 'A') SHALL NOT EXCEED MAXIMUM SPACING PER THE DESIGN DRAWINGS/SPECIFICATIONS.
• LOCATE EXISTING REINFORCEMENT AND INSTALL ANODE CENTERED BETWEEN BARS.

DRAWING REVISIONS

#	DATE	BY	DESCRIPTION
0	01/24/20	SY	FUSION ANODE UPDATE



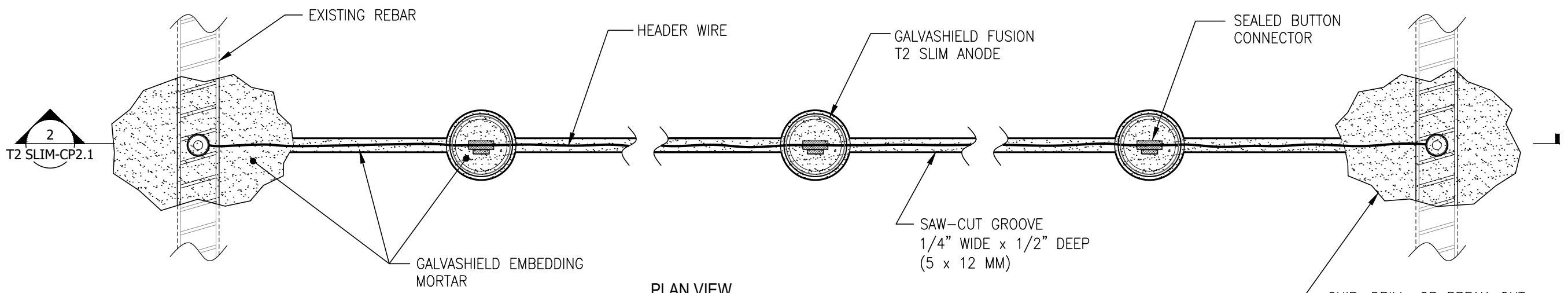
**FUSION T2 ANODES  
CORROSION PROTECTION  
SHOP DRAWINGS**

**FUSION T2 SLIM ANODE  
INSTALLATION WITH  
HEADER WIRE**

VECTOR CORROSION TECHNOLOGIES  
27A UPPER HIGH STREET  
CRADLEY HEATH  
BIRMINGHAM  
WEST MIDLANDS  
B64 5HX  
PH: 01384 671400  
VECTOR-CORROSION.EU

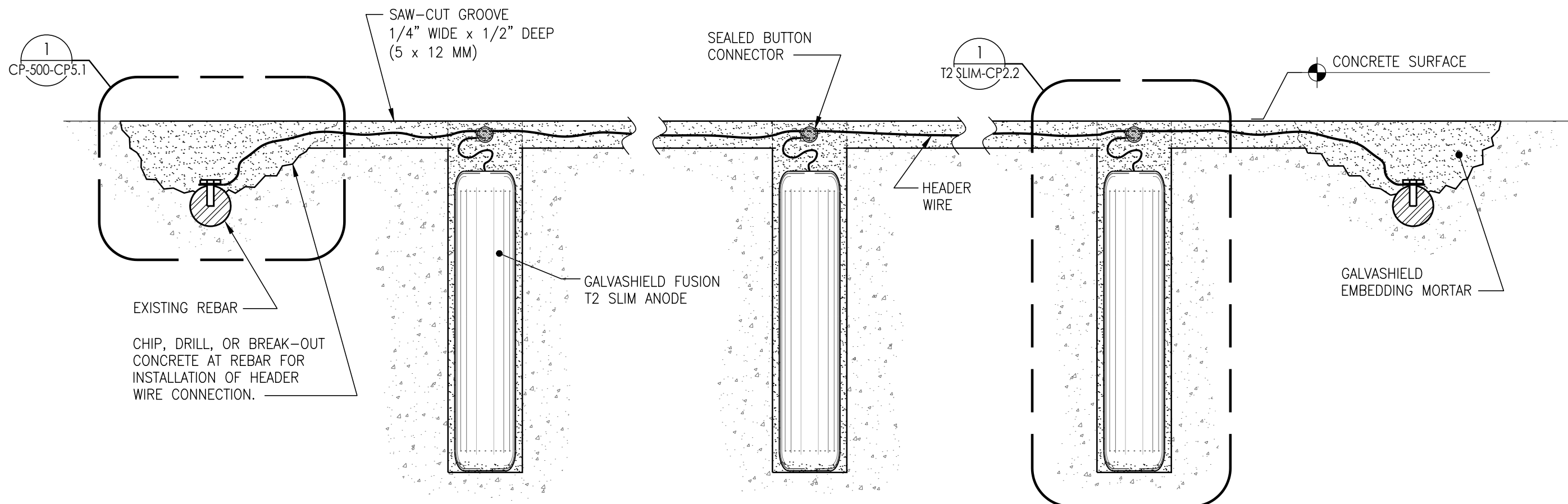
PROJECT NO. —

DRAWING NO.  
**T2 SLIM-CP2.1**



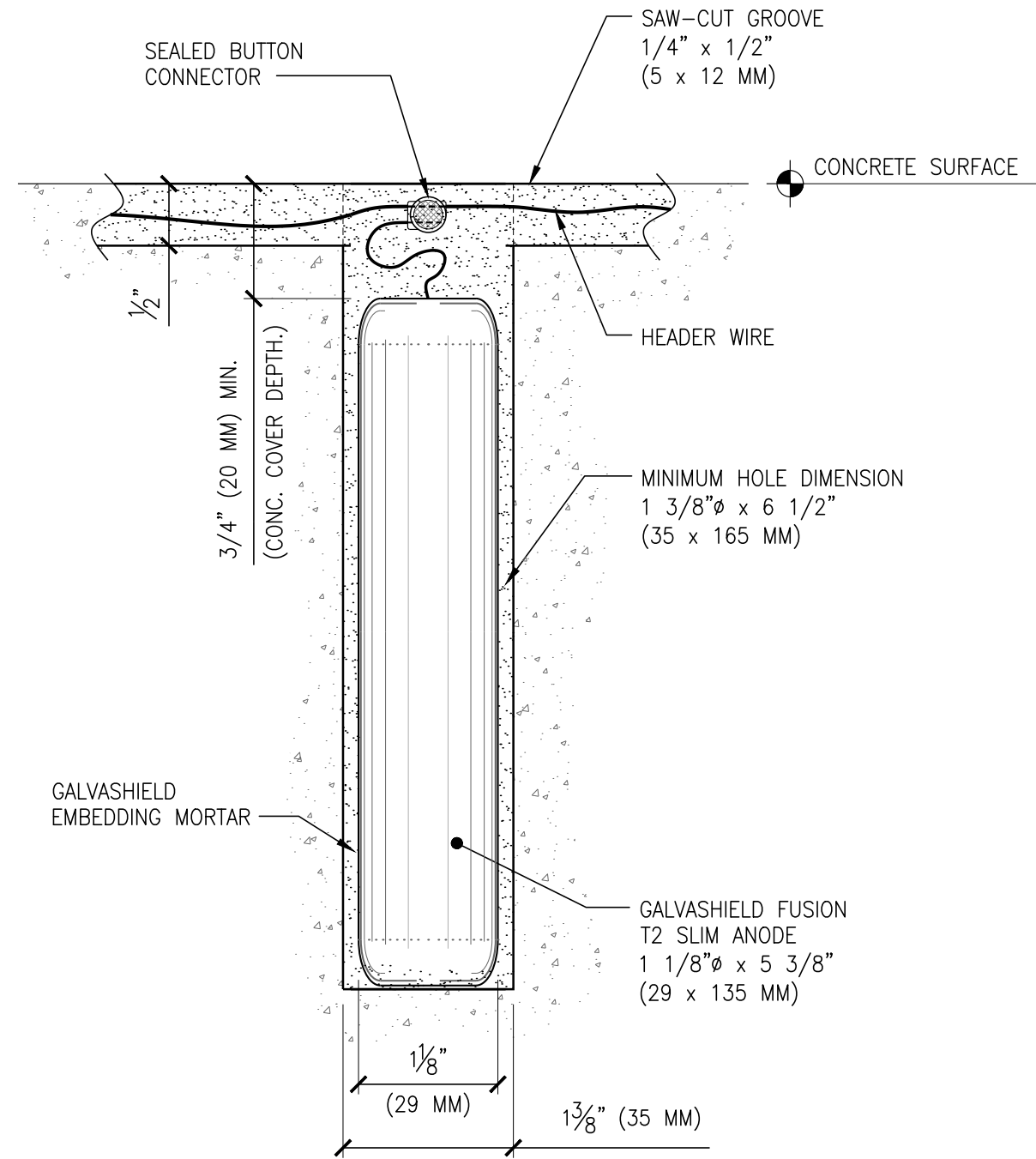
**1** PLAN VIEW  
GALVASHIELD FUSION T2 SLIM ANODES WITH HEADER WIRE  
SCALE: 6" = 1'-0"

CHIP, DRILL, OR BREAK-OUT CONCRETE AT REBAR FOR INSTALLATION OF HEADER WIRE CONNECTION (SEE CONNECTION DETAILS).



**2** SECTION VIEW  
GALVASHIELD FUSION T2 SLIM ANODES WITH HEADER WIRE  
SCALE: 6" = 1'-0"

CHIP, DRILL, OR BREAK-OUT CONCRETE AT REBAR FOR INSTALLATION OF HEADER WIRE CONNECTION.



1 SECTION VIEW  
 GALVASHIELD FUSION T2 SLIM ANODE - INSTALLATION WITH HEADER WIRE  
 SCALE: 9" = 1'-0"

DRAWING REVISIONS

#	DATE	BY	DESCRIPTION
0	01/24/20	SY	FUSION ANODE UPDATE



**FUSION T2 ANODES  
 CORROSION PROTECTION  
 SHOP DRAWINGS**

**FUSION T2 SLIM ANODE  
 INSTALLATION WITH  
 HEADER WIRE**

VECTOR CORROSION  
 TECHNOLOGIES  
 27A UPPER HIGH STREET  
 CRADLEY HEATH  
 BIRMINGHAM  
 WEST MIDLANDS  
 B64 5HX  
 PH: 01384 671400  
 VECTOR-CORROSION.EU

PROJECT NO. —

DRAWING NO.  
 T2 SLIM-  
 CP2.2

DRAWING REVISIONS

#	DATE	BY	DESCRIPTION
0	01/24/20	SY	FUSION ANODE UPDATE



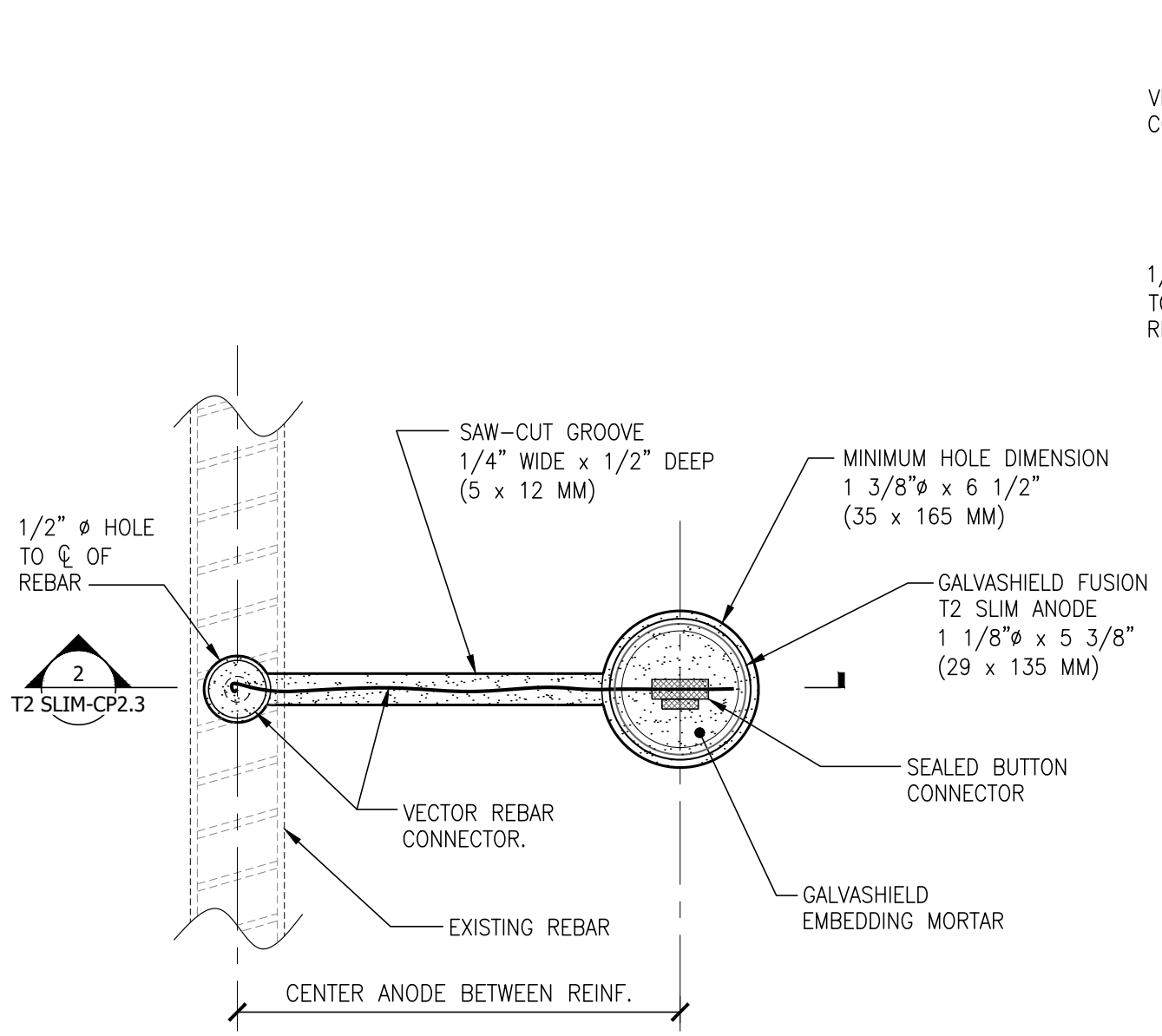
**FUSION T2 ANODES  
CORROSION PROTECTION  
SHOP DRAWINGS**

**FUSION T2 SLIM  
INSTALLATION WITH  
DIRECT CONNECTION**

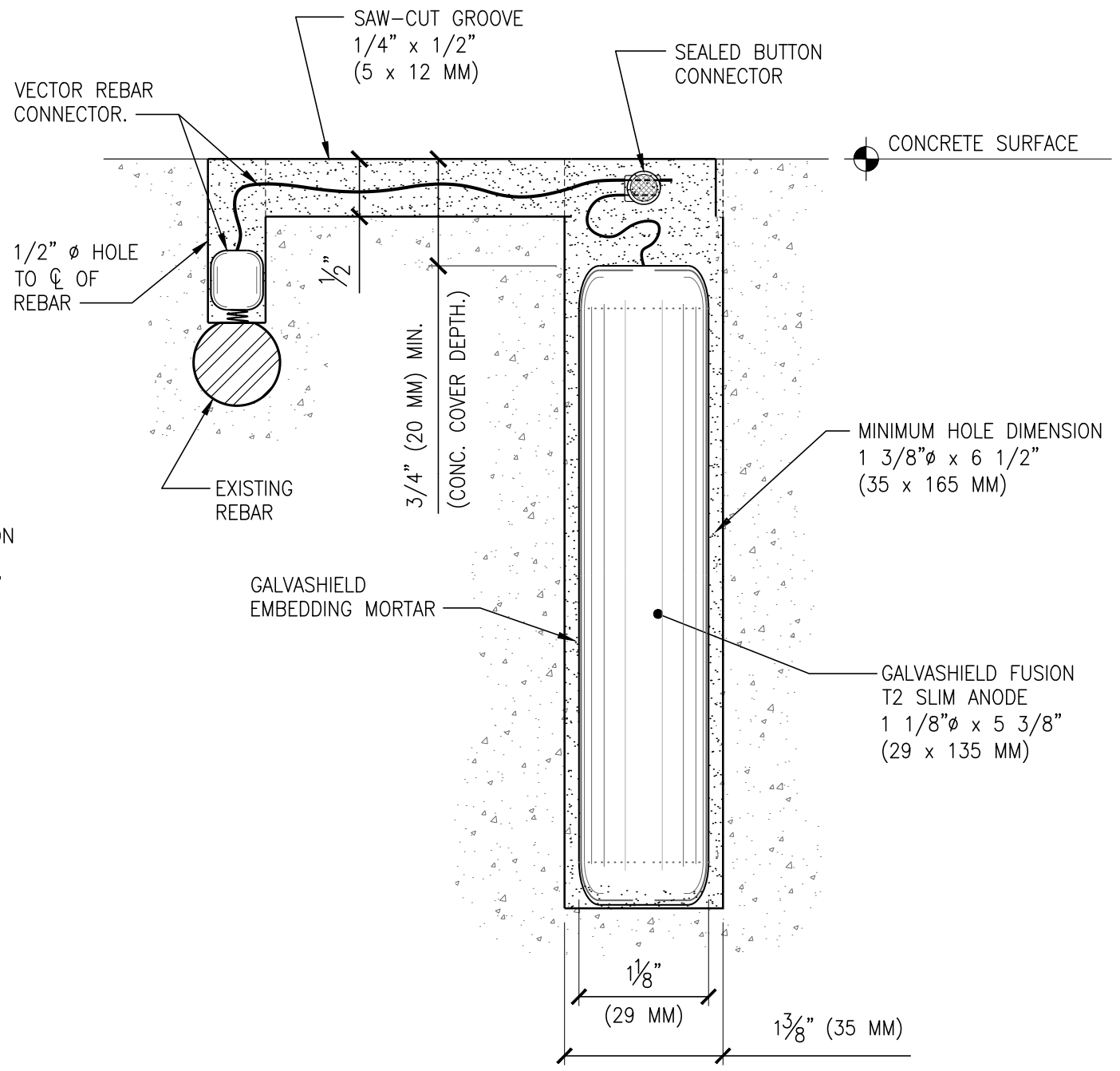
VECTOR CORROSION TECHNOLOGIES  
27A UPPER HIGH STREET  
CRADLEY HEATH  
BIRMINGHAM  
WEST MIDLANDS  
B64 5HX  
PH: 01384 671400  
VECTOR-CORROSION.EU

PROJECT NO. —

DRAWING NO.  
**T2 SLIM-CP2.3**



**1** PLAN VIEW  
GALVASHIELD FUSION T2 SLIM ANODE - DIRECT CONNECTION  
SCALE: 9" = 1'-0"



**2** SECTION VIEW  
GALVASHIELD FUSION T2 SLIM ANODE - DIRECT CONNECTION  
SCALE: 9" = 1'-0"

DRAWING REVISIONS

#	DATE	BY	DESCRIPTION
0	01/24/20	SY	FUSION ANODE UPDATE



**FUSION T2 ANODES  
CORROSION PROTECTION  
SHOP DRAWINGS**

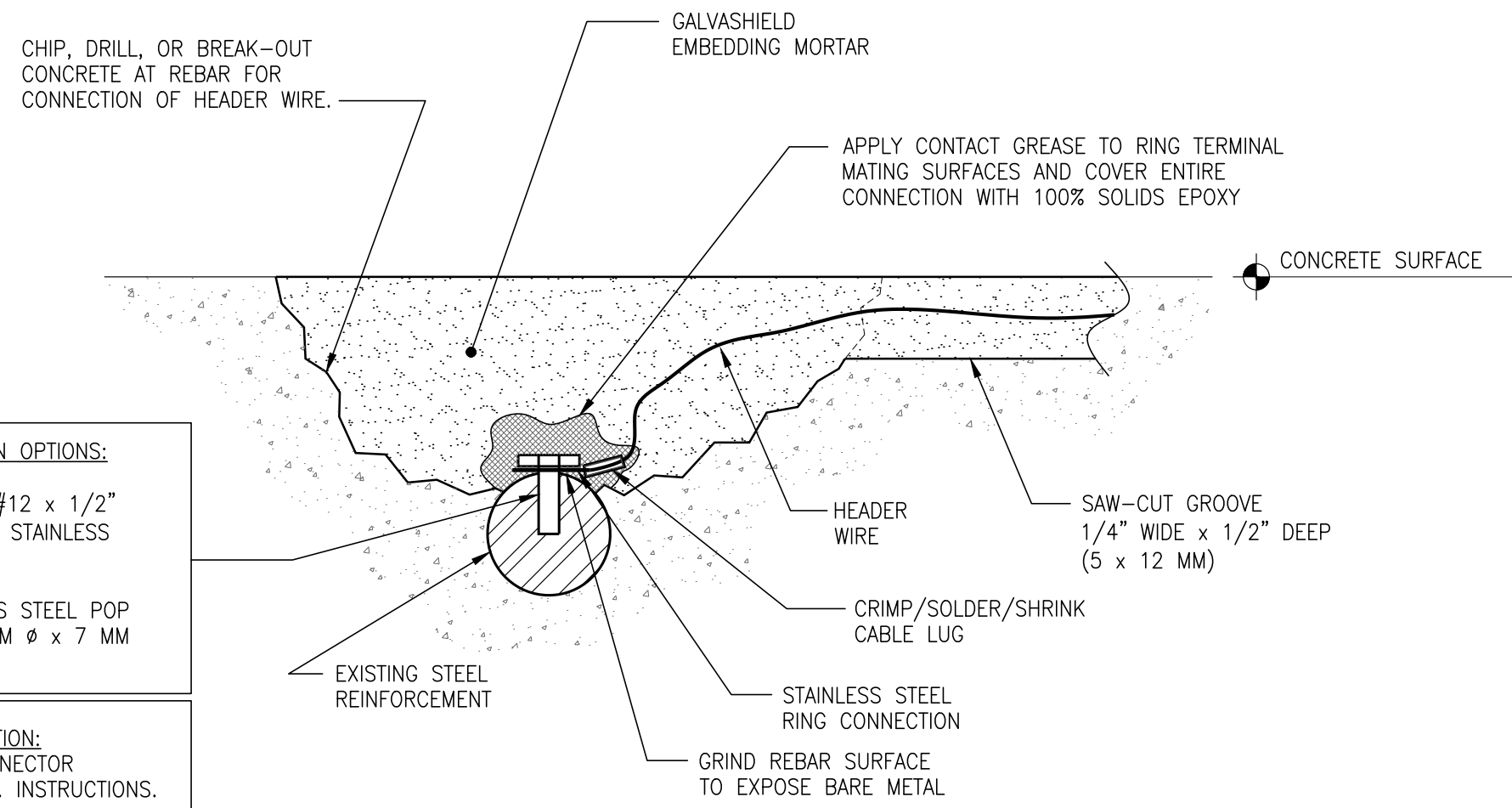
**DRILLED HEADER  
WIRE CONNECTION**

VECTOR CORROSION  
TECHNOLOGIES  
27A UPPER HIGH STREET  
CRADLEY HEATH  
BIRMINGHAM  
WEST MIDLANDS  
B64 5HX  
PH: 01384 671400  
VECTOR-CORROSION.EU

PROJECT NO. —

DRAWING NO.

CP5.1



- DRILLED CONNECTION OPTIONS:
- DRILL & TAP WITH #12 x 1/2" (6 MM Ø x 12 MM) STAINLESS STEEL CAP SCREW.
  - 3.2 MM Ø STAINLESS STEEL POP RIVET INTO A 3.5 MM Ø x 7 MM DEEP HOLE.

ALTERNATE CONNECTION:  
VECTOR REBAR CONNECTOR  
INSTALLED PER MFR. INSTRUCTIONS.

SECTION  
DRILLED CONNECTION TO REBAR  
1 SCALE: 12" = 1'-0"